



参数名称 Name of parameter	单位 Unit	HBT100S26220C
理论混凝土输送量（高压/低压） Output capacity	m ³ /h	54(high pres.)/103(low pres.)
理论泵送出口压力（高压/低压） Output pressure	MPa	26(high pres.)/13.4(low pres.)
分配阀形式 Distribution Valve		S 管阀 Valve
电机型号		2-Y2-315S-4
电机额定功率 Rated power of motor	kW	110+110
额定转速/电压 Rated rotating speed /voltage	rpm/V	1480/380
主油泵排量 Displacement of the main oil pump	ml/r	260+260
泵送系统油压 Oil pres.of the pumping system	MPa	32
输送缸内径×行程 Delivery cylinder diam.×stroke	mm	Φ200×1800
液压系统 Hydraulic system circle form	双泵双回路开式系统 Twin-pump and -circuit open sys.	
料斗容积 Hopper volume	L	800
上料高度 Feeding height	mm	1400
液压油箱容积 Oil tank volume	L	1000
允许最大骨料粒径 Max.grain size	mm	卵石 pebbleΦ50, 碎石 crush.stoneΦ40
外形：长×宽×高 Overall dimension L×W×H	mm	6650×2270×2215
总质量 Total mass	kg	9750



优化设计的S管
S-tube with optimized design



摆动及搅拌机构：采用动压双层密封及隔离漏浆设计。
Swing and mixing mechanism with double layer sealing and isolated leakage device.



三维几何优化料斗
3D-geometry optimized designed hopper.

材质及参数如有变动恕不另行通知

Materials and specifications are subject to change without notice.



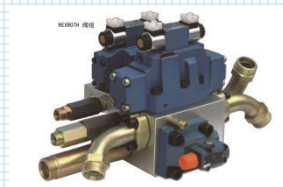
采用中国制造知名品牌电机
 Adopt famous brand motor made in China

采用西门子或三菱品牌的可程序控制器，对整机进行精确控制。在程序中设置了温度、压力、转速等多重自动保护模式。为方便夜间施工，设置了安全电源输出插座。Using **Siemens** or **Mitsubishi** brand PLC, the precise control of the whole machine. In the program set temperature, pressure, speed and other multiple automatic protection mode. In order to facilitate the night construction, set up a safe power output socket.



科学设计的双泵双回路开式液压系统，泵送与换向油路独立工作，换向系统采用恒压泵供油。系统简洁、可靠，便于故障排查与维护，元件寿命长。The **Twin-pump and -circuit open system** is designed scientifically, the pump feed and commutation oil circuit work independently, the commutation system uses the constant pressure pump to supply oil. The system is simple and reliable, easy to troubleshoot and maintain, and the life of components is long.

采用吸油和回油过滤技术，避免异物进入液压系统，更提高了液压系统的可靠性与元件寿命。Oil absorption and oil return filtration technology is adopted to avoid foreign matters entering the hydraulic system, which improves the reliability and component life of the hydraulic system.



主泵和液压阀组均采用德国力士乐等国际知名品牌，确保液压系统的稳定性。液压胶管采用美国伊顿产品。搅拌系统采用了意大利高泰克混凝土泵专用的手动换向集成阀，在简化系统的同时显著提高其可靠性。The main pump and the hydraulic valve group adopt the German **Rexroth** and other international famous brands, to ensure the stability of the hydraulic system. The hydraulic hose adopts American **Eaton** products. The mixing system adopts the manual reversing integrated Italy **Galtech** valve specially used concrete pump, which can simplify the system and significantly improve its reliability.